

Meicheng®

CPT-380 PC to Video Converter

USER MANUAL



www.meicheng.com.tw

Applications

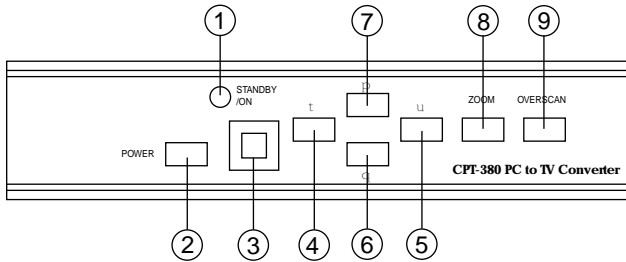
The CPT-380 PC to Video scan converter is designed to convert a variety of computer images, from 640x480 up to 1600x1200, to interlaced NTSC or PAL video. It is ideal for use in applications like video conference, home theater, business presentation, lecturing room or viewing PC image on TV.

Features

1. Automatically detects and down converts the incoming PC images to NTSC or PAL.
2. Support high resolution PC input up to UXGA(1600x1200@60Hz).
3. Output video image is available in NTSC or PAL.
4. Support high input refresh rate up to 140Hz(VGA).
5. Adjustable image scaling.
6. Pan, Position, and Zoom.
7. Advance 2-D flicker filter ensures flicker-free picture.
8. Adjustable contrast, brightness, color, sharpness.
9. Last memory.
10. Adjustment and control through RS-232 interface.
11. Useful functions-high brite, overscan, freeze, test pattern, magnifier.
12. Remote control.
13. OSD operation display.
14. Wide/Standard screen.

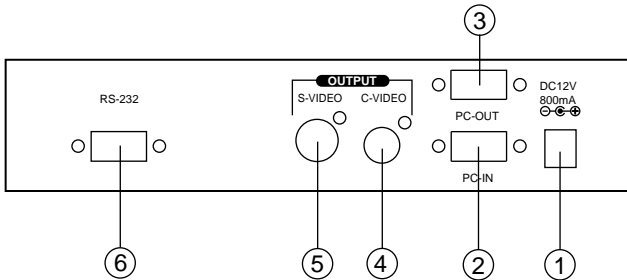
Operation Controls and Functions

Front Panel



1. Standby/On indicator: The indicator illuminates in red when it is in Standby mode, illuminates in green when it is in ON mode.
2. Power button: Push the button to turn power ON or Standby.
3. Remote control sensor.
4. t Button: Under zoom mode push the button to adjust the picture leftward.
5. u Button: Under zoom mode push the button to adjust the picture rightward.
6. q Button: Under zoom mode push the button to adjust the picture downward.
7. p Button: Under zoom mode push the button to adjust the picture upward.
8. Zoom button: Push the button to zoom in or zoom out of a picture.
9. Overscan button: Push the button to overscan/underscan the picture.

Rear Panel

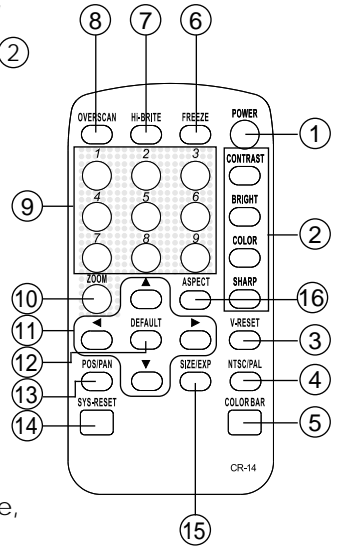


1. DC power supply 12V 800mA.
2. PC input VGA connector.
3. PC loop-through output connector.
4. Composite video out RCA connector.
5. S-video out connector.
6. RS-232 DB-9 connector.

Operation Controls and Functions

Remote controls and Functions

1. Power: Power ON/Off.
2. Video setting adjustments for picture contrast, bright, color and sharpness.
3. V-Reset: Press the button to reset picture adjustment ② to factory default value.
4. NTSC/PAL: Press the button to select NTSC or PAL as video output.
5. Color bar pattern ON/Off: Press the button to show color bar pattern on the screen when there is no PC input. Press again to close color bar.
6. Image freeze ON/Off: Press the button to freeze/unfreeze an image.
7. Hi-bright ON/Off: Press the button to show enhanced brightness picture.
8. Under/Over Scan: Press the button to choose a underscan image or overscan image.
9. 9-blocks selection(Zoom): Under zoom mode press one of the buttons to select its corresponding sub-area which is 1/9 of the full screen.
10. Zoom ON/Off: Press the button to zoom in an picture, press again to zoom out.
11. Horizontal/Vertical adjust knob:
 - Adjust the size or position of a image when it is under Zoom, Pan/Position, or Size/EXP mode.
 - Adjust setting value of picture adjustment in ②.
12. Default: Press the button to revert the following parameters to factory preset value:
 - Zoom
 - Position
 - Size
 - Picture adjust
13. Pos/Pan: When a picture is in underscan mode, press the button to do position adjustment. When a picture is in overscan mode, press the button to do pan adjustment.
14. System reset: Press the button to revert all system parameters back to factory preset value.
The system parameters are default as follows:
 - Overscan
 - NTSC output
 - 4:3 aspect
 - Normal brightness
 - Video settings reset, position/ pan/size /expand reset.
15. Size/EXP: When a picture is in underscan mode, press the button to do size adjustment. When a picture is in overscan mode, press the button to do expand adjustment.
16. Aspect: Press the button to switch between standard 4:3 and widescreen 16:9 aspect ratio.



RS-232 Software Operation

* **PC OS: Windows 98/ME/2000/XP**

* **Software installation:**

1. Place installation CD on CD-ROM drive.
2. Execute setup.exe on installation CD.
3. OS maybe requires to update some files.

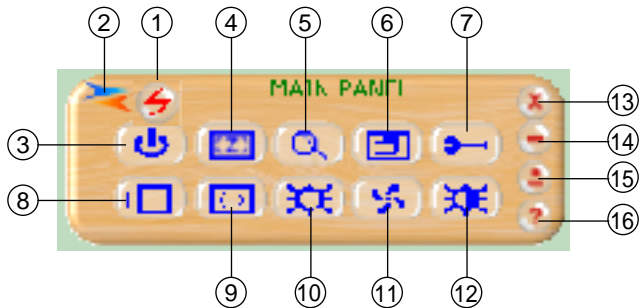
Please re-start PC. After starting PC ready, execute setup. exe again.

4. Click taskbar menu (START)->(Programs)->(CPT-380PCI) to execute software.

* **If RS-232 or CPT-380 is not ready then software enters virtual mode.**

After RS-232 and CPT-380 connection being ready, start the software again and enters real mode.

* **Main Panel**



- | | | | |
|-------------------|--------------------|--------------------|-----------------|
| 1. Power | 5. Magnifier | 9. Size/Expand | 13. Close |
| 2. Mode indicator | 6. Over/Under scan | 10. Hi-Brite | 14. Minimize |
| 3. System reset | 7. Option | 11. Freeze | 15. System tray |
| 4. Zoom | 8. Position/Pan | 12. Video settings | 16. About |

* **Power:** Power ON/Off.

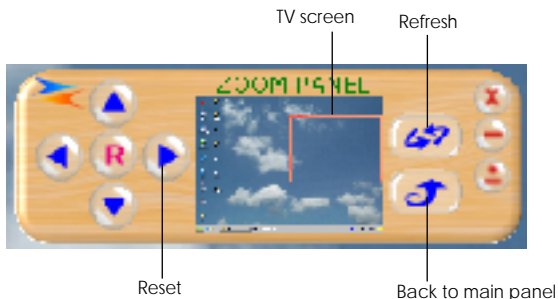
* **Mode indicator:**

Grey icon: Virtual mode operation.

Colored icon: Real mode operation.

* **System reset:** Reset CPT-380 unit.

* **Zoom:** Drag and move (TV-screen) to the place where you want to see.
If the PC screen image is changed, then click(refresh).

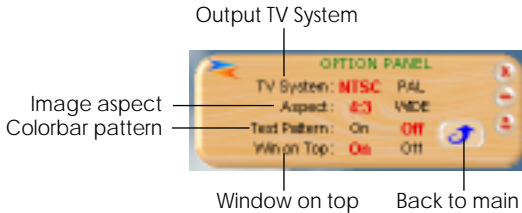


RS-232 Software Operation

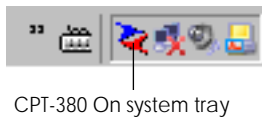
- * **Magnifier:** Drag and move magnifier to the place where you want to see. If the screen image is changed, then click(refresh).



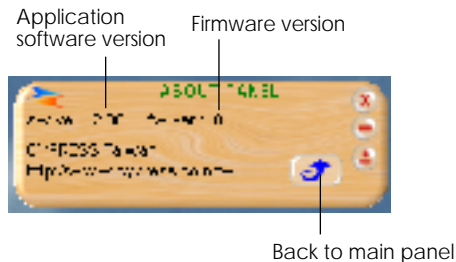
- * **Over/Under scan:** TV overscan adjustments are "pan" and "expand" ; underscan adjustments are "position" and "size".
- * **Option:** TV system: NTSC or PAL output
Aspect pattern: 4:3 or widescreen.
Test pattern: Colorbar test pattern ON/Off.
Window ON Top: Application software window always on top ON/Off.



- * **System tray:** Shrink application software to system tray click the icon and return to normal window.



- * **Minimize:** Shrink application software to window taskbar.
- * **About:** Display application software version and firmware version.



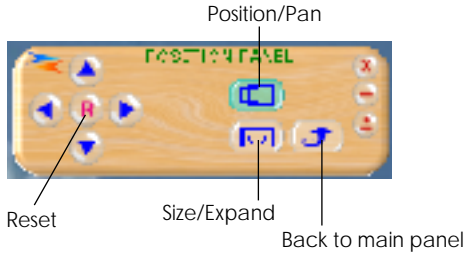
RS-232 Software Operation

* **Close:** Terminate application software.

* **Position/Pan and Size/Expand adjustments**

Position/Size for underscan

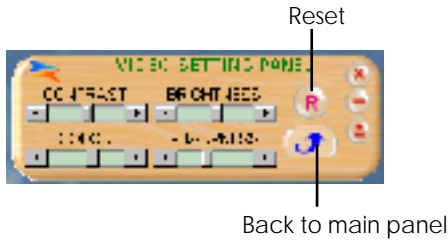
Pan/Expand for overscan



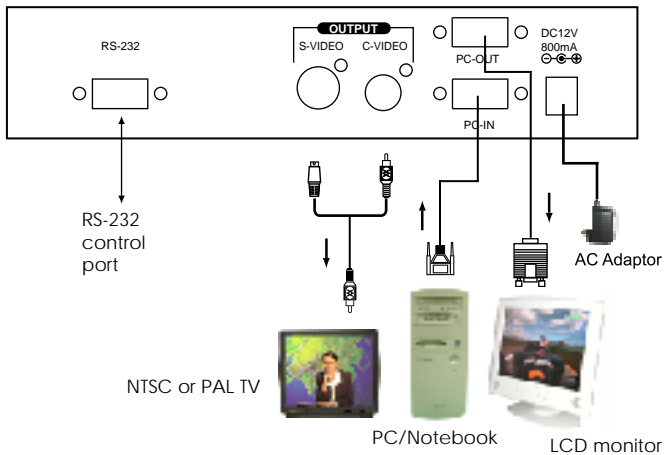
* **High brite:** High brite is useful for picture browsing and movie playing.

* **Screen freeze:** Still screen.

* **Video settings:** Contrast, Brightness, Color, Sharpness adjustment.



Connection and Installation



CPT-380 RS-232 Remote Control Protocol

* The connection between CPT-380 and remote controller with RS-232 modem cable.

Pins definition of modem cable

CPT380			Remote Controller	
PIN	Definition		PIN	Definition
1	NC	→	1	NC
2	TxD		2	RxD
3	RxD		3	TxD
4	NC		4	NC
5	GND	←	5	GND
6	NC		6	NC
7	NC		7	NC
8	NC		8	NC
9	NC		9	NC

* RS-232 transmission format:

Baud Rate : 9600 bps

Data Bit : 8 bits

Parity : None

Stop Bit : 1 bit

CPT-380 RS-232 Remote Control Protocol

* Command / Response codes of RS-232 transmission:

" The command / response codes are the combination of 3 bytes. the 1st, 2nd byte are text and the 3rd byte is value."

Remote Controller Command Codes to CPT-380

Code	Comment	
'PW'+0 'PW'+1	POWER	power off power on
'NP'+0 'NP'+1	N/P	NTSC output PAL output
'FZ'+0 'FZ'+1	FREEZE	freeze image off freeze image on
'OV'+0 'OV'+1	OVERSCAN	underscan overscan
'ZM'+0 'ZM'+1	ZOOM	zoom off zoom on
'MU'+0 'MU'+1	move UP	move UP button release move UP button press
'MD'+0 'MD'+1	move DOWN	move DOWN button release move DOWN button press
'ML'+0 'ML'+1	move LEFT	move LEFT button release move LEFT button press
'MR'+0 'MR'+1	move RIGHT	move RIGHT button release move RIGHT button press
'SU'+0 'SU'+1	size UP	shorter height image button release shorter height button press
'SD'+0 'SD'+1	size DOWN	higher height image button release higher height image button press
'SL'+0 'SL'+1	size LEFT	narrower width image button release narrower width image button press
'SR'+0 'SR'+1	size RIGHT	wider width image button release wider width image button press
'RS'+0 'RS'+1 'RS'+2 'RS'+3	RESET	system reset reset image location reset image size reset video settings
'TP'+0 'TP'+1	PATTERN	test pattern off test pattern on
'HB'+0 'HB'+1	Hi Brite	hi-brightness off hi-brightness on
'AR'+value	zoom AREA	'AR'+1 ~ 'AR'+9 zoom area1 ~ area9
'AS'+0 'AS'+1	ASPECT	aspect is 4:3 aspect is wide screen
'CO'+value	CONTRAST v	alue = 0 ~ 63
'BR'+value	BRIGHTNESS v	alue = 0 ~ 255
'SA'+value	SATURATION v	alue = 0 ~ 63
'FF'+value	FLICKER	alue = 0 ~ 21
'VR'+1	VERSION	require CPT -380 unit firmware version
		retrieve CPT-380 all status
'AL'+1	ALL	retrieve 'PW'+0 only when unit power off 'PW'+1 'NP'+? 'OV'+? 'AS'+? 'ZM'+? 'CO'+? 'BR'+? 'SA'+? 'SH'+? 'FF'+?

CPT-380 RS-232 Remote Control Protocol

CPT-380 transmits codes to Remote Controller when CPT-380 operating.

Code		Comment
'PW'+0 'PW'+1	POWER	power off power on
'NP'+0 'NP'+1	N/P	NTSC output PAL output
'FZ'+0 'FZ'+1	FREEZE	freeze image off freeze image on
'OV'+0 'OV'+1	OVERSCAN	underscan overscan
'ZM'+0 'ZM'+1	ZOOM	zoom off zoom on
'RS'+0 'RS'+1 'RS'+2 'RS'+3	RESET	system reset reset image location reset image size reset video settings
'TP'+0 'TP'+1	PATTERN	test pattern off test pattern on
'HB'+0 'HB'+1	Hi Brite	hi-brightness off hi-brightness on
'AR'+value	zoom AREA	'AR'+1 ~ 'AR'+9 zoom area1 ~ area9
'AS'+0 'AS'+1	ASPECT	aspect is 4:3 aspect is wide screen
'VR'+value	VERSION	CPB80 firmware version

Meicheng[®] MEI CHENG AUDIO VIDEO CO., LTD
Address: 5F., NO.111, SEC. 2, HUAN HO N. RD., TAIPEI, 10376 TAIWAN
Tel: +886(2) 2585 3869, Fax: +886(2) 2593 6672
Website: www.meicheng.com.tw Email: mei.cheng@msa.hinet.net